



Tooling

The Perfect Impression: Taking your project from concept to production.

OGIHARA AMERICA CORPORATION can assist you with all your tooling needs from design to production. Our services can cost effectively deliver on-time, tooling and panel quality for enhanced product realization and value. Ogihara America has launched over 100 new products enabling us to develop timely solutions to your metal stamping and fabrication needs.

The Tooling Service Division is a full service team dedicated to exceeding the quality and productivity expectations of our internal and external customers. Our team of dedicated Skilled Trades, Die Finishers and Machinists utilize the latest technology to provide complete customer satisfaction for all tooling buy-off needs.

EQUIPMENT

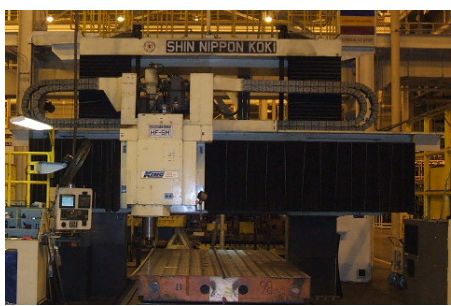
— PRESSES —



- Kojima 2000 ton (hydraulic press w/ cushion pins)
- Kojima 1000 ton (hydraulic press w/ cushion pins)
- Ogihara 400 ton (die spotting press)

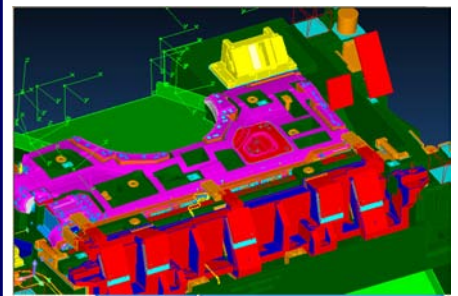
Access to five mechanical production press lines for tryout

— MACHINES —



- Shin Nippon Koki CNC Large Milling Machine
- Machining Center 4XIF
- Radial Drilling Machine TRE 2000D
- Pre / Post Heat Oven
- Lathe / Surface Grinder

— SYSTEMS —



- Auto CAD
- Auto Form
- CATIA
- IDEAS
- SMIRT 8
- ProE
- TEBIS
- Unigraphics

DIE DESIGN

The perfect design is developed in close cooperation with our customers using advanced computer technologies.

DIE MANUFACTURING

Ogihara Japan's dies are manufactured through a high speed and high quality serial process based on integrated data information.

OGIHARA AMERICA CORPORATION

1480 West McPherson Park Drive, Howell, MI 48843-3997

Phone: +1 517 548 4900 Fax: +1 517 548 6079 E-mail: Sales@Ogihara.com

www.ogihara.com



Tooling

The Perfect Impression: Taking your project from concept to production.

SERVICES

- Panel buy-off exceeding customer surface and dimensional quality standards
- Sheet metal blank reduction activities for added savings
- Engineering Change incorporation
- Die spotting and adaptation
- Press line tryout and buy-off production panels
- Buy-off for tooling static (components) and dynamic (function) characteristics
- Die refurbishment - punch finishing, trim/pierce sharpening, flange gap/timing, high pressure washing, preventative maintenance, scrap fall concerns, automation and sensors

ENGINEERING

Providing a complete facility for TOTAL Program Management

TOOLING

Providing FULL SERVICE tool manufacturing and maintenance capabilities

STAMPING

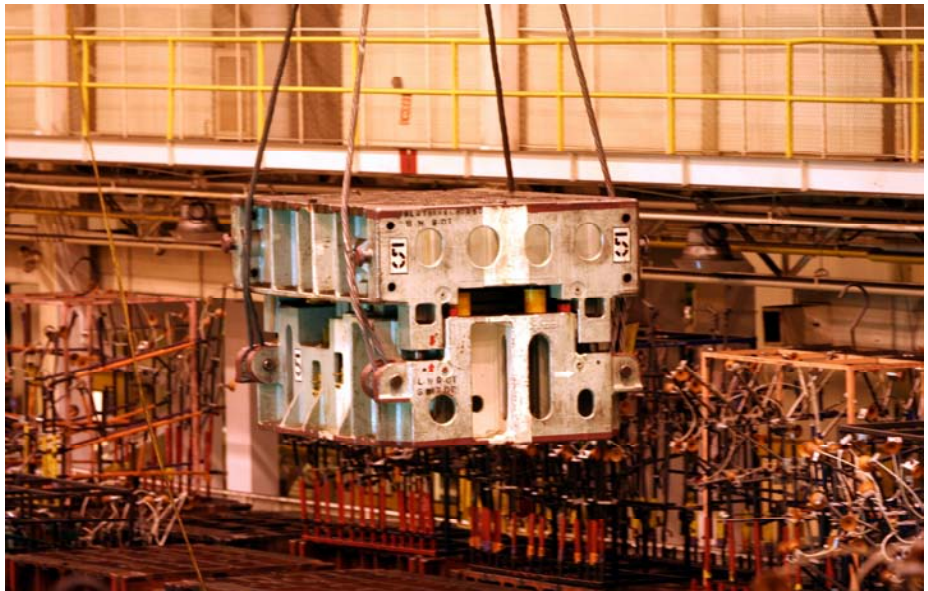
Providing high QUALITY Class A panels and related subassembly

ASSEMBLY

Providing MODULAR PRODUCTION with Just-In-Time delivery

BENEFITS

- Reduced costs for home press downtime
- Added value to product by bringing the tool to latest design levels
- Reduced cost for expatriate expenses and travel time
- Single sourcing for all tooling service requirements
- Dedicated team



OGIHARA AMERICA CORPORATION

1480 West McPherson Park Drive, Howell, MI 48843-3997

Phone: +1 517 548 4900 Fax: +1 517 548 6079 E-mail: Sales@Ogihara.com

www.ogihara.com